

SE-927

Installation, Maintenance and Operating Instructions

DESCRIPTION

Aerated Laboratory Eye Wash Unit, bench mounted, hand operated C/W Emergency Eye Wash sign.

SPECIFICATIONS

EYE WASH - Aerated, Dual Stream
VALVE - 10mm Chrome Plated Brass
ACTIVATOR - Squeeze Handle

FLOW DATA

FLOW PRESSURE (KPa) : 136
FLOW RATE (LPM) : 12

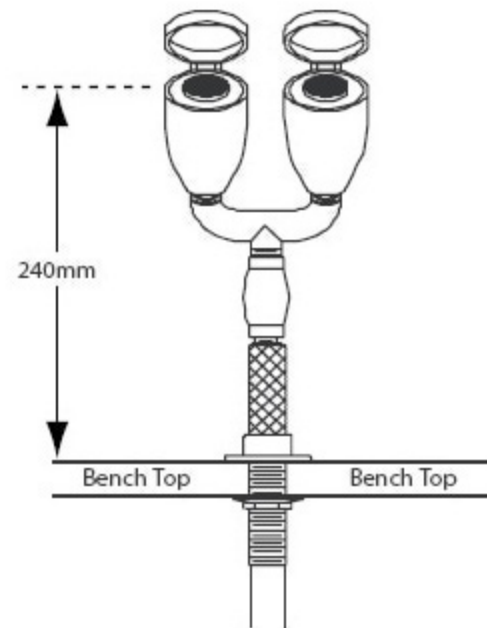
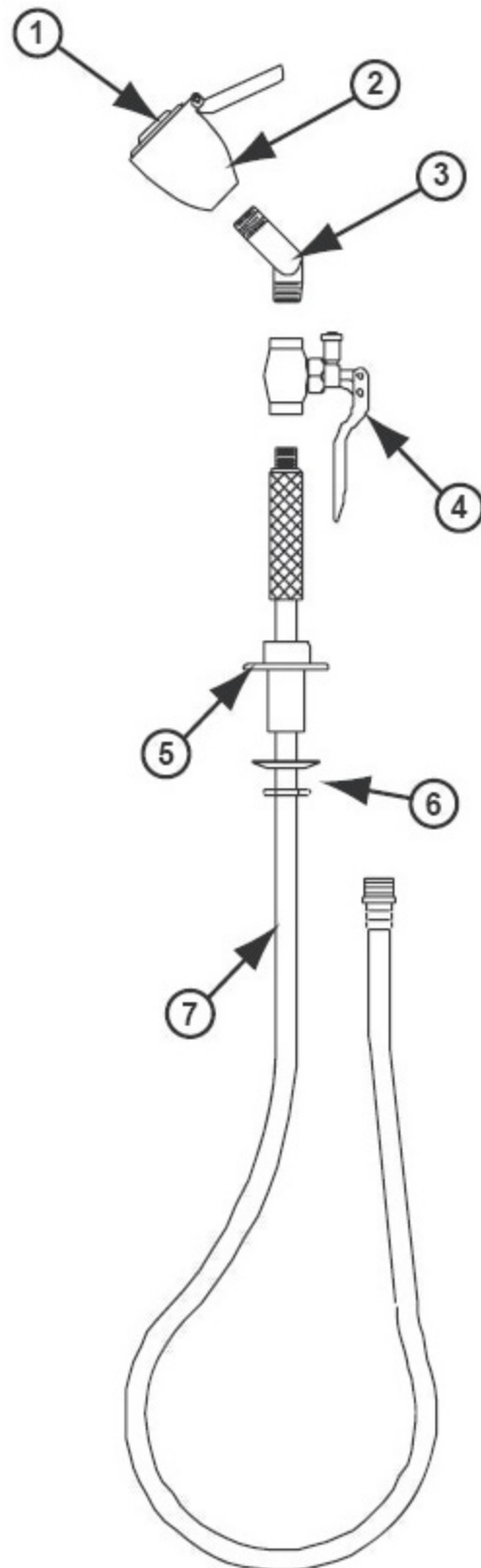
INSTALLATION

After unpacking carton, ensure all components are present. Mark out the desired position on the bench top (that has a maximum thickness of 57mm). Drill a 25mm - 30mm hole. Mount the unit to the bench top using the hardware supplied. Connect water supply to the unit. Turn water supply on and assure all connections are water tight. Activate the unit and allow to flow for 30 seconds to flush line of any impurities.

NOTE : This unit should be connected to an uninterrupted source of potable water, no less than 15mm (1/2"), with a minimum flowing pressure of 130KPa and a maximum static pressure of 860 KPa.

OPERATION

The eye wash is activated by squeezing the activation handle. The unit will operate until the activation handle is released.



SPARE PARTS LIST

No.	DESCRIPTION	PART No.
1	Aerator Screen Assembly	G05 0384
2	Nozzle Assembly	G38 0415
3	Bull Horn Tee	G24 0110
4	Squeeze Handle & Valve	RPG20 - 1742
5	Deck Flange	26 0247
6	Washer 7& Locknut	01 0239
7	1.8m Hose	G63 0064



Aerator Screen Assembly & Cap
Part No - 05 1177 RCP



Aerator Screen Assembly
Part No - G05 0384

MAINTENANCE

Maintenance should be carried out weekly and yearly as detailed in the schedule. Should you need to repair this unit, please reference the spare parts list for correct part numbers. Before any maintenance is done be sure the water supply is shut off.

MAINTENANCE SCHEDULE

WEEKLY	- Activate eyewash unit using handle - Allow water to flow for 30 seconds to flush line. - Ensure water flows evenly from both outlets. - Ensure water is clean.
YEARLY	- Ensure unit complies with AS 4775-2007.

WARNING : Use only genuine Speakman parts when replacing or repairing components.



SPEAKMAN®
SAFETY PRODUCTS

SE-927
AERATED EYE WASH UNIT

PWS
PREMIER WORKPLACE SOLUTIONS
TRUSTED PEOPLE • RISK REDUCTION • INTELLIGENT OUTCOMES